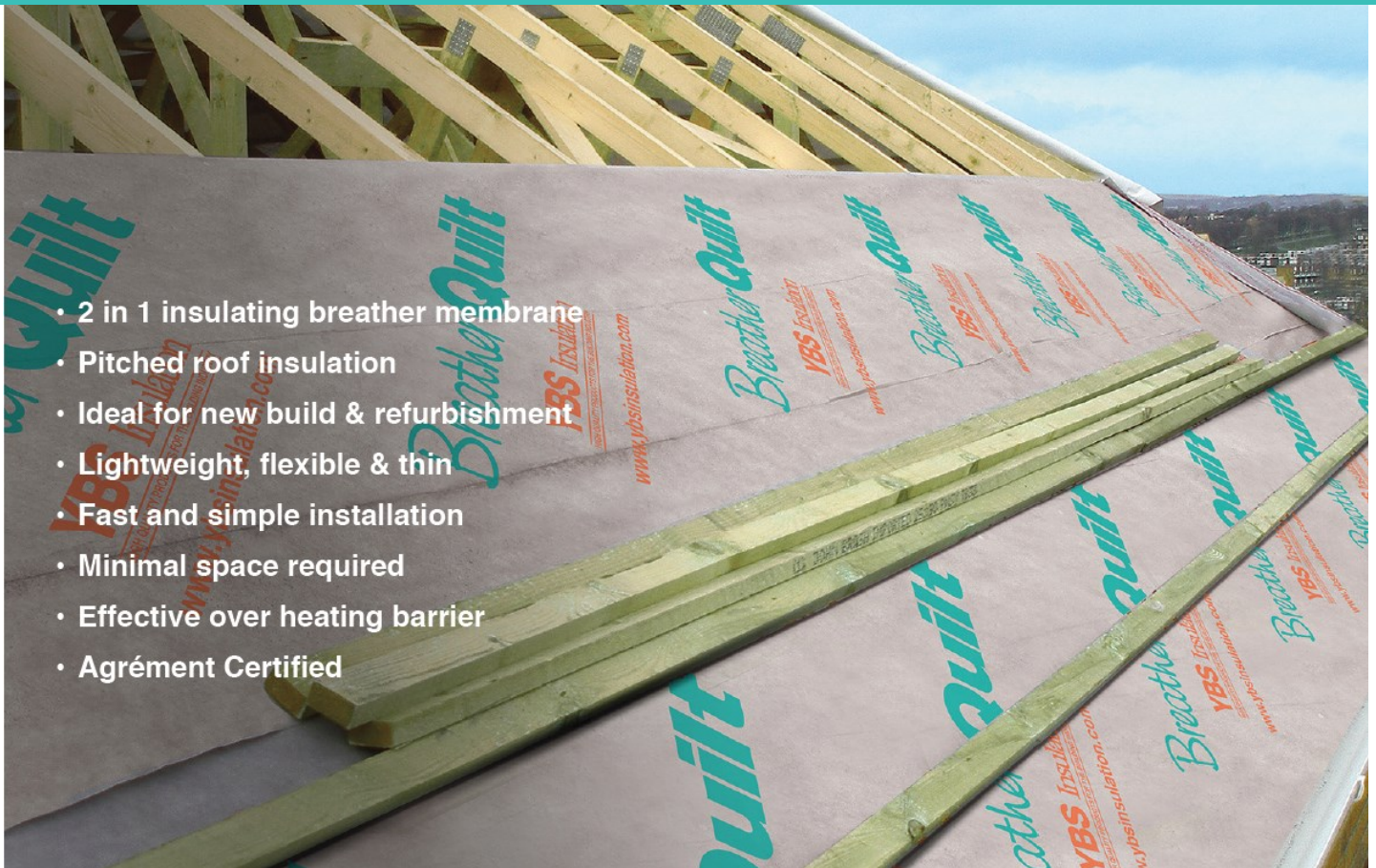


# Breather Quilt

2 in 1 Breathable Multi-layer Insulation Blanket

Thermal insulation in a 40mm thin, flexible, multi-layer breathable membrane



- 2 in 1 insulating breather membrane
- Pitched roof insulation
- Ideal for new build & refurbishment
- Lightweight, flexible & thin
- Fast and simple installation
- Minimal space required
- Effective over heating barrier
- Agrément Certified

## As Used in the

## TyvaQuilt 0.18 Roofing System

Fast & Easy to Fit, in less Rafter Space AND at Less Cost

As Easy as 1, 2, 3

### Step 1

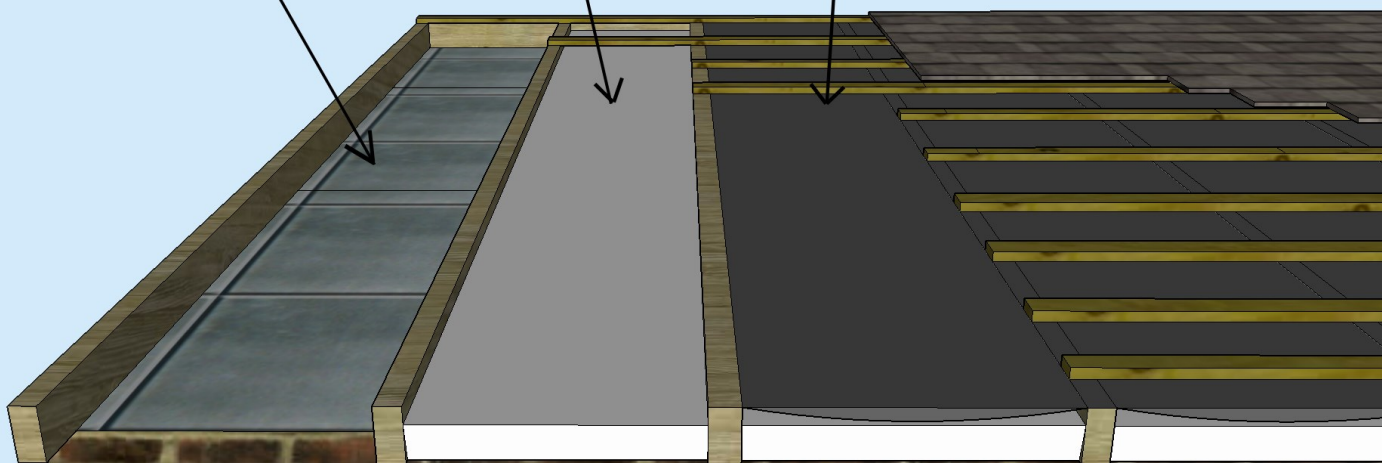
SuperQuilt LG is Installed by Stapling Below Rafters & then Taping

### Step 2

75mm Mineral Wool / Non-Itch is Layed Between the Rafters

### Step 3

BreatherQuilt Is Stapled Over Rafter Allowed to sag in by 25mm. Then fit tile Battens ready for tiles



# BreatherQuilt

2 in 1 Breathable Multi-layer Insulation Blanket

## Insulation for use in roofs

### Benefits

- 2 in 1 insulation & breather membrane
- Lightweight, thin & lexible
- Fast and simple installation
- Tear resistant
- For pitched roofs between 20° and 70°

BreatherQuilt is a very lexible, easy to it, breathable multi-layer insulation achieving a high thermal resistance.

### General ixing instructions

Installation of BreatherQuilt for pitched roof applications and additional insulation products should be in accordance with the manufacturers certiciate, ixing instructions and current good building practice.

Start at the bottom of the roof by rolling BreatherQuilt across the rafters and staple in to place. Tape a line of double sided tape along the top edge of the material.

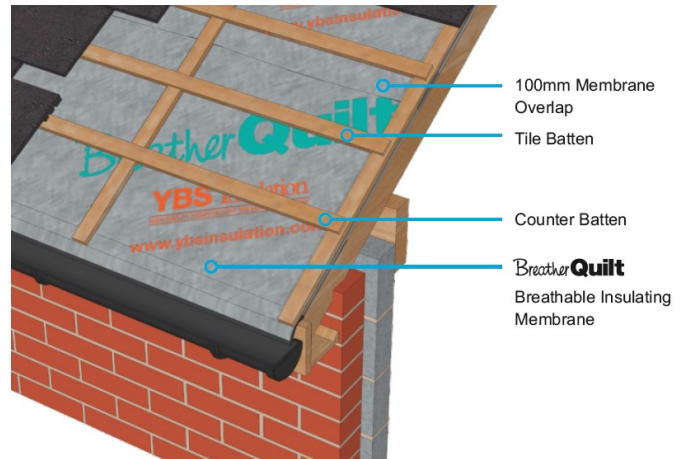
Install the next layer of BreatherQuilt using the 100mm membrane overlap. Staple as before then secure with the double sided tape, to cover the joint.

BreatherQuilt can be cut with craft knife or a sharp pair of scissors. Staple at regular intervals. Minimum 14mm stainless steel or galvanised staples are recommended.

No protective clothing/handling required.



### Installation Detail - Over rafter - Counter battened



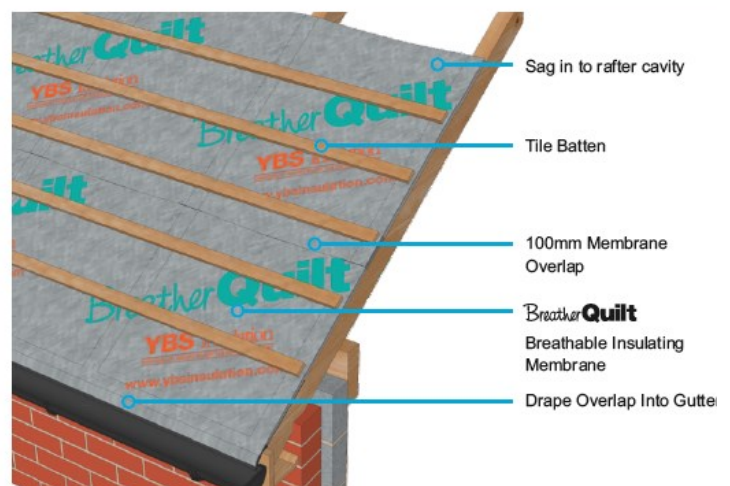
Starting at the edge of the roof and working horizontally, nail or staple BreatherQuilt to the first rafter using 14mm staples, pull tought and proceed across the roof.

At the eaves BreatherQuilt should extend onto a suitable eaves carrier.

Install 25mm battens parallel with the rafters.

Proceed with tile/slate battens and tile/slates.

### Installation without counter batten



Starting at the edge of the roof and working horizontally, nail or staple BreatherQuilt to the first rafter using 14mm staples, BreatherQuilt should hang down between the rafters ensuring once tile battens are installed a clear 10mm drape is formed at the centre of all rafter spaces.

At the eaves BreatherQuilt sould extend onto a suitable eaves carrier.

Proceed with tile/slate battens and tile/slates.

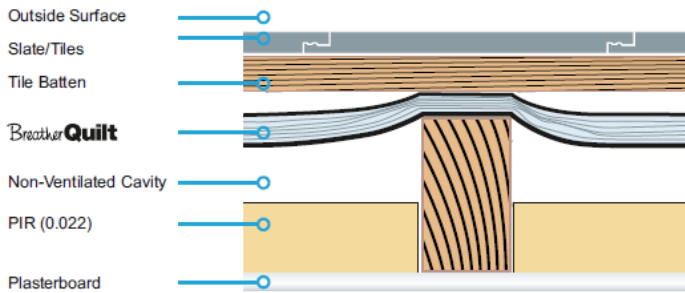
# BreatherQuilt

2 in 1 Breathable Multi-layer Insulation Blanket

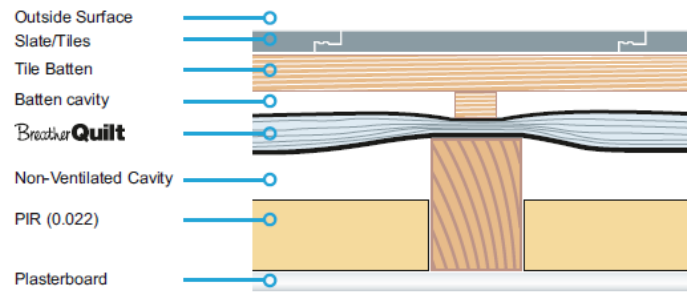
Thermal insulation in a 40mm thin, flexible, multi-layer breathable membrane

## Refurbishment Pitch Roof 0.18

### Draped Detail



### Counter Batten Detail



#### U-value Table

Description (rafters at 400 centres)	U-Value
BreatherQuilt	0.57 W/m <sup>2</sup> k
BreatherQuilt and 125mm PIR	0.18 W/m <sup>2</sup> k
BreatherQuilt and 175mm Mineral wool	0.18 W/m <sup>2</sup> k

#### U-Value Table

Description (rafters at 600 centres)	U-Value
BreatherQuilt	0.58 W/m <sup>2</sup> k
BreatherQuilt and 110mm PIR	0.18 W/m <sup>2</sup> k
BreatherQuilt and 160mm Mineral wool	0.18 W/m <sup>2</sup> k

#### U-value Table

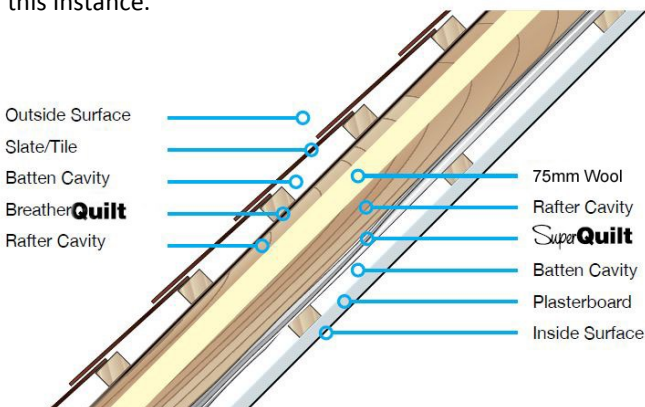
Description (rafters at 400 centres)	U-Value
BreatherQuilt	0.61 W/m <sup>2</sup> k
BreatherQuilt and 130mm PIR	0.18 W/m <sup>2</sup> k
BreatherQuilt and 180mm Mineral wool	0.18 W/m <sup>2</sup> k

#### U-Value Table

Description (rafters at 600 centres)	U-Value
BreatherQuilt	0.61 W/m <sup>2</sup> k
BreatherQuilt and 115mm PIR	0.18 W/m <sup>2</sup> k
BreatherQuilt and 165mm Mineral wool	0.18 W/m <sup>2</sup> k

# 125mm Deep Rafters 0.18

SuperQuilt is Staped directly below the Rafters before being fully taped and sealed to maintain a complete thermal barrier. 75mm Mineral wool/Non-Itch is then laid between the rafters from above. BreatherQuilt can then be stapled over the rafters, allowing it to Sag down slightly by around 25mm. Cross battens are then fitted ready to tile the roof. Note, No Breather Membrane is required in this Instance.



### U-Value Combined Method (W/m<sup>2</sup>K)

**0.18**

	Thickness (mm)	Conductivity (W/mK)	Resistance (m <sup>2</sup> K/W)
Outside Surface	-	-	0.040
Slate/Tile	10.00	-	-
Batten Cavity	25.00	-	-
BreatherQuilt	10.00	1.00	0.942
Rafter Cavity	30.00	-	0.340
Mineral Wool	75.00	0.032	2.344
Rafter Cavity	25.00	-	0.490
SuperQuilt	14.00	-	1.520
Batten Cavity	25.00	-	0.490
Plasterboard	12.50	0.190	0.066
Inside Surface	-	-	0.100
<b>Total Resistance</b>			<b>6.292</b>

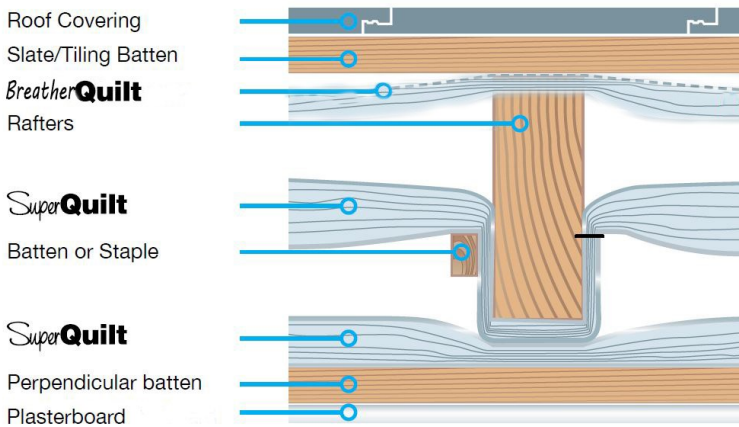
# BreatherQuilt

2 in 1 Breathable Multi-layer Insulation Blanket

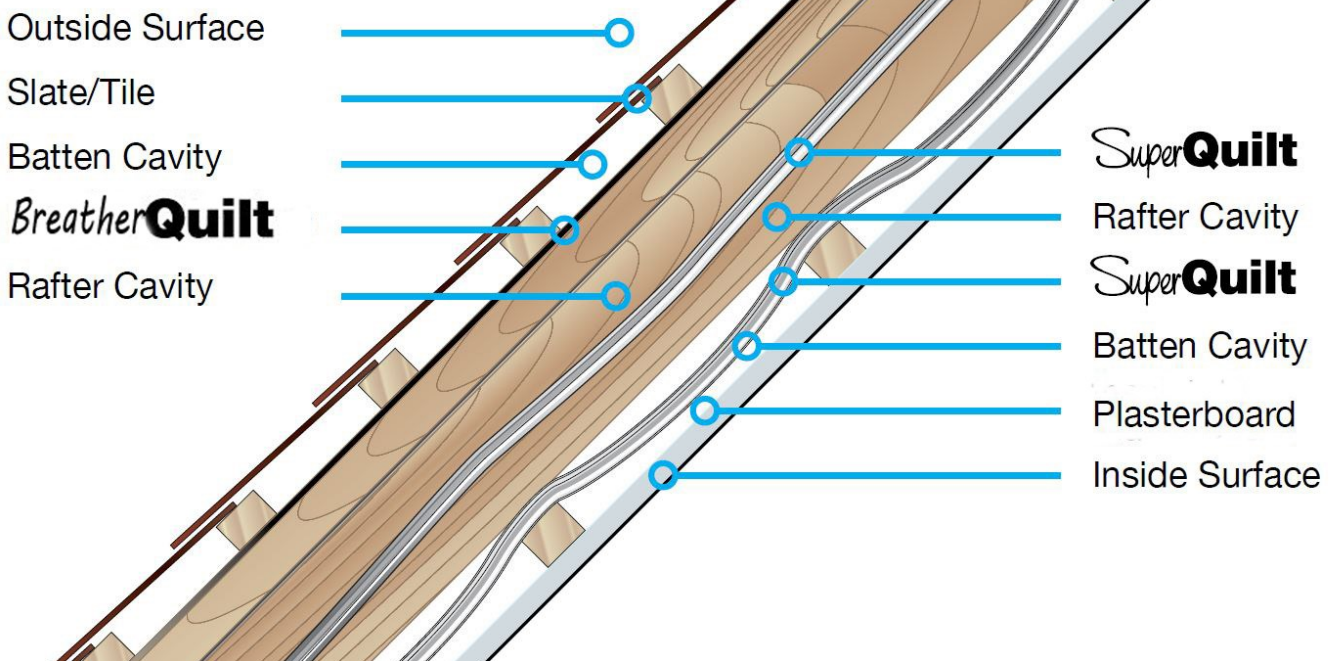
Thermal insulation in a 40mm thin, flexible, multi-layer breathable membrane

## 75mm Deep Rafters 0.18

SuperQuilt is Stapled back into the Rafters by 38mm before being fully taped and sealed to maintain a complete thermal barrier. A second Layer of SuperQuilt is then Stapled directly below, through the first layer. Again, taping and sealing once installed. BreatherQuilt can then be stapled over the rafters, allowing it to Sag down slightly by around 25mm. Cross battens are then fitted ready to tile the roof. Note, No Breather Membrane is required in this Instance.



U-Value Combined Method (W/m <sup>2</sup> K)			0.18
	Thickness (mm)	Conductivity (W/mK)	Resistance (m <sup>2</sup> K/W)
Outside Surface	-	-	0.040
Slate/Tile	10.00	-	-
Batten Cavity	25.00	-	-
<b>BreatherQuilt</b>	10.00	1.00	1.100
Rafter Cavity	25.00	-	0.490
<b>SuperQuilt</b>	14.00	-	1.520
Rafter Cavity	38.00	-	0.490
<b>SuperQuilt</b>	14.00	-	1.520
Batten Cavity	25.00	-	0.490
Plasterboard	12.50	0.190	0.066
Inside Surface	-	-	0.100
Total Resistance			5.784



Calculated to include timber bridging

# Breather Quilt

2 in 1 Breathable Multi-layer Insulation Blanket

Thermal insulation in a 40mm thin, flexible, multi-layer breathable membrane

## Technical Properties

### Product Description

11 Components

Thickness	40mm approx.
-----------	--------------

Weight	600g/m <sup>2</sup>
--------	---------------------

### Mechanical Properties

Value

Reference Standard

Thermal performance		
---------------------	--	--

Core	1.00m <sup>2</sup> K/W	EN 16012
------	------------------------	----------

Core + 1 Airspaces	1.45m <sup>2</sup> K/W	EN 6946
--------------------	------------------------	---------

Emission coefficients of surfaces	0.05	EN 16012
-----------------------------------	------	----------

Tensile strength	142KPA	BS EN 1608
------------------	--------	------------

Packaging	12m <sup>2</sup>	
-----------	------------------	--

Width	1.2m	
-------	------	--

Length	10m	
--------	-----	--

Weight	7.5Kg	
--------	-------	--

**Order Direct 7 Days a Week at:**

**Ecohome-Insulation.com**

**or Call: 0114 323 0045**