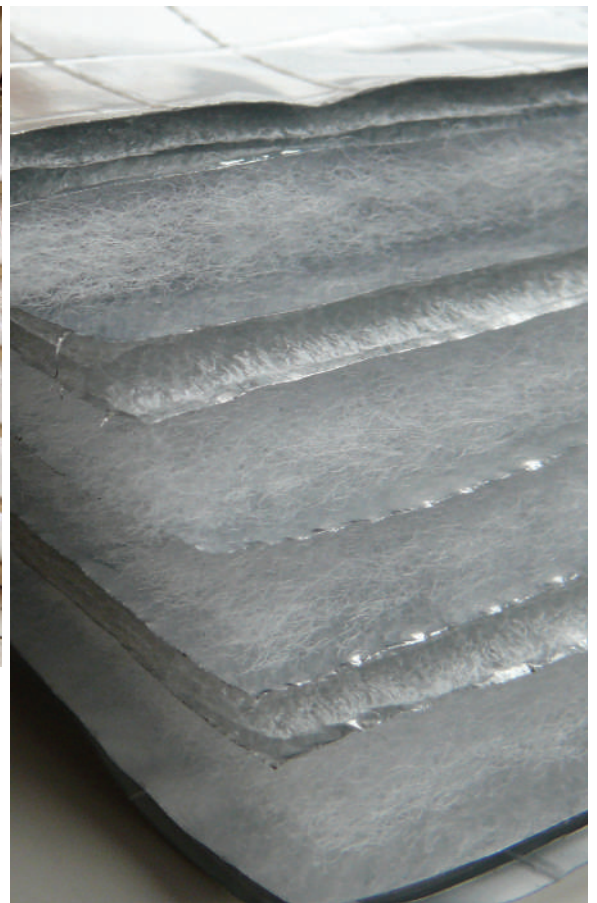


SuperQuilt

Multi-layer Insulation Blanket for Roofs, Walls & Floors

e



The Highest Performing Certificated MultiFoil on the Market



Multifoil-Insulation.com

UK and European Distributors Specialising in
Multifoil Insulation Solutions

Insulation for use in Walls

Benefits

- Meets requirements of L1A, L1B 2010
- Fully certificated
- Thermally tested in accordance with EN 16012
- High thermal resistance of up to 3.00m²K/W
- Ideal for New build & Refurbishment
- Effective solar over-heating barrier
- Lightweight, thin & flexible
- Fast and simple installation
- Vapour control layer

SuperQuilt is a very flexible, easy to fit, multilayer insulation thermally tested in accordance with EN 16012 achieving a high thermal resistance of up to 3.00m²K/W for SuperQuilt accompanied by a 25mm air cavity either side of the material.

How does SuperQuilt Work?

Due to the special composition of multi-layers of insulation, SuperQuilt effectively deals with all forms of energy transfer (i.e. conduction, convection and radiation). SuperQuilt works most effectively by reflecting infra-red radiation. This means that not only is SuperQuilt effective in winter by reflecting heat back into the building and cold out, but also in summer SuperQuilt is a very effective barrier to solar overheating which reduces the need for artificial cooling systems as it prevents the accumulation of heat within the building.

General Fixing Instructions

Installation of SuperQuilt for Timber Frame and Masonry Wall Applications and additional insulation products should be in accordance with the certificate, fixing instructions and current good building practice.

When the SuperQuilt is cut to fit around openings, care should be taken to minimise gaps. SuperQuilt can be cut easily using sharp scissors or a knife.

The surfaces of the masonry wall should be sound and free from loose material; large projections should be removed and holes filled and levelled. A survey of the wall may be required to establish the extent of any packing that may be required to ensure a uniform plane for the materials to be fixed.

Bearing surfaces for timber battens should comply with BS 8212 : 1995. The depth of timber battens will determine the air space achieved on either side of the SuperQuilt, we recommend 25mm battens.

All joints and perforations in the products must be securely sealed with ThermaSeal Foil Tape

Services may be accommodated within the void created by the dry lining system.

If the wall you are refurbishing has a damp or mould issue, this needs to/must be rectified before any insulation is installed.



Timber Frame & Dormer Cheeks

Fixing Instructions

Installation of SuperQuilt for Timber Frame wall applications and additional insulation products should be in accordance with the certificate, fixing instructions and good building practice.

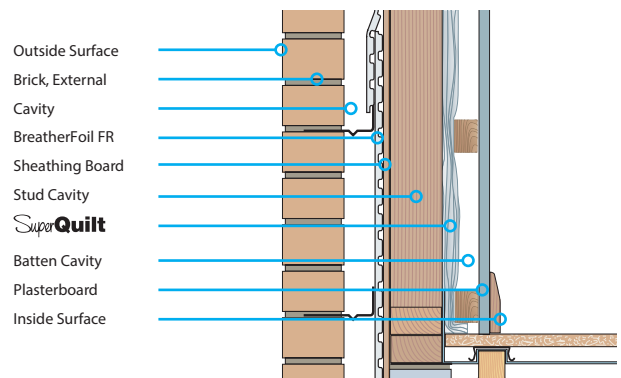
SuperQuilt is applied directly from the roll either vertically or horizontally depending on the wall height, pulled tight and stapled onto the timber studs at minimum 300mm centres.

SuperQuilt should be overlapped at each joint by approx. 50mm and stapled onto the battens, the joints should be sealed using 75mm ThermaSeal Foil Tape.

Perpendicular counter battens, recommended 25mm by 38mm are fixed to the wall. Battens must always be placed at the top and bottom of the wall and around the perimeter of doors and windows.

The plasterboard is fixed over the materials and onto the battens in the usual manner.

U-Value Combined Method (W/m ² K)			0.24
	Thickness (mm)	Conductivity (W/mK)	Resistance (m ² K/W)
Outside Surface	-	-	0.060
Brick, External	102.50	0.770	0.133
Cavity	50.00	-	0.665
BreatherFoil FR	4.00	-	0.125
Sheathing Board	12.00	0.130	0.092
Stud Cavity	89.00	-	0.740
SuperQuilt	14.00	-	1.52
Batten Cavity	38.00	-	0.740
Plasterboard	12.50	0.190	0.066
Inside Surface	-	-	0.120



U-Value table

*For custom calculations please send request to Sales@multifoil-insulation.com

Description

Description	25mm Batten	38mm Batten
SuperQuilt and YBS BreatherFoil FR	0.25 W/m ² k	0.24 W/m ² k
SuperQuilt, YBS BreatherFoil FR and 50mm Glasswool 0.040	0.21 W/m ² k	0.20 W/m ² k
SuperQuilt, YBS BreatherFoil FR and 100mm Glasswool 0.040	0.17 W/m ² k	0.16 W/m ² k
SuperQuilt, YBS BreatherFoil FR and 25mm PIR 0.022	0.21 W/m ² k	0.20 W/m ² k
SuperQuilt, YBS BreatherFoil FR and 50mm PIR 0.022	0.18 W/m ² k	0.17 W/m ² k
SuperQuilt, YBS BreatherFoil FR and 100mm PIR 0.022	0.14 W/m ² k	0.14 W/m ² k
SuperQuilt, YBS BreatherFoil FR and 140mm PIR 0.022	0.13 W/m ² k	0.12 W/m ² k
SuperQuilt, YBS BreatherFoil and SuperQuilt	0.17 W/m ² k	0.17 W/m ² k
SuperQuilt, Standard Breather Membrane	0.30 W/m ² k	0.28 W/m ² k
SuperQuilt, Standard Breather Membrane and 50mm Glasswool 0.040	0.24 W/m ² k	0.22 W/m ² k
SuperQuilt, Standard Breather Membrane and 100mm Glasswool 0.040	0.19 W/m ² k	0.18 W/m ² k
SuperQuilt, Standard Breather Membrane and 25mm PIR 0.022	0.25 W/m ² k	0.23 W/m ² k
SuperQuilt, Standard Breather Membrane and 50mm PIR 0.022	0.21 W/m ² k	0.20 W/m ² k
SuperQuilt, Standard Breather Membrane and 100mm PIR 0.022	0.16 W/m ² k	0.15 W/m ² k
SuperQuilt, Standard Breather Membrane and 140mm PIR 0.022	0.14 W/m ² k	0.13 W/m ² k
SuperQuilt, Standard Breather Membrane and SuperQuilt	0.19 W/m ² k	0.18 W/m ² k

Cavity Wall

Fixing Instructions

A spider clip is fitted on to the wall tie against the inner leaf and this creates the minimum cavity between the product and the blockwork.

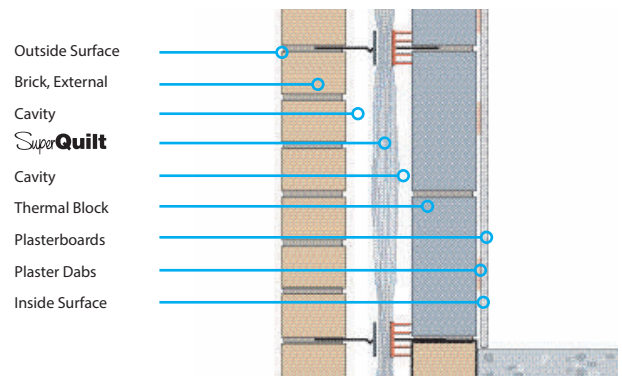
The initial run of SuperQuilt is positioned over the wall ties, ensuring that it is kept taut but with sufficient drop to below floor insulation. SuperQuilt can be cut with a sharp blade to fit onto wall ties. The top edge of the material should be a minimum of 75mm over the top row of the wall ties giving a weathered lap joint.

When a full run is in position, the retaining clip is fixed to the wall tie to keep the SuperQuilt central to the cavity.

The second leaf is built up to the topmost line of the wall ties, (or two courses below) and the second run of SuperQuilt is installed ensuring a minimum lap of 75mm. Vertical joints in the SuperQuilt should always be on a line of wall ties, ensuring a 100mm lap (ie 50mm either side of the wall tie) and sealed using ThermaSeal Foil Tape

At internal and external corners a recommended air space of 25mm must be maintained.

U-Value Combined Method (W/m ² K)			0.24
	Thickness (mm)	Conductivity (W/mK)	Resistance (m ² K/W)
Outside Surface	-	-	0.040
Brick, External	102.50	0.770	0.133
Cavity	50.00	-	0.740
SuperQuilt	40.00	-	1.52
Cavity	20.00	-	0.740
Thermal Block	100.00	0.110	0.909
Plaster Dabs	15.00	-	0.170
Plasterboard	12.50	0.190	0.066
Inside Surface	-	-	0.130



U-Value table

*For custom calculations please send request to Sales@multifoil-Insulation.com

Description

Description	100mm Cavity	110mm Cavity
SuperQuilt and 100mm Dense Block	1.130	0.31 W/m ² k
SuperQuilt and 100mm Medium Block	0.500	0.29 W/m ² k
SuperQuilt and 100mm Lightweight Block	0.250	0.28 W/m ² k
SuperQuilt and 100mm Thermal Block	1.110	0.27 W/m ² k
SuperQuilt and 100mm Thermal Block 0.110 Thin Mortar	0.110	0.26 W/m ² k
SuperQuilt and 140mm Dense Block	1.130	0.24 W/m ² k
SuperQuilt and 140mm Medium Block	0.500	0.29 W/m ² k
SuperQuilt and 140mm Lightweight Block	0.250	0.27 W/m ² k
SuperQuilt and 140mm Thermal Block	1.110	0.26 W/m ² k
SuperQuilt and 140mm Thermal Block 0.110 Thin Mortar	0.110	0.23 W/m ² k

Try our Free and Easy to Use Online U-Value Calculator!

Dry Lining

Fixing Instructions

Vertical counter battens, minimum 25mm by 38mm battens are fixed to the wall at 400mm centres. Battens must always be placed at the top and bottom of the wall and around the perimeter of doors and windows.

SuperQuilt is applied directly from the roll either vertically or horizontally depending on the wall height, pulled tight and stapled onto the battens at minimum 300mm centres.

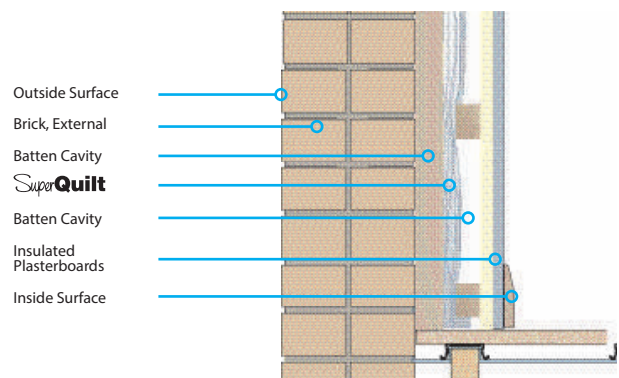
SuperQuilt should be overlapped at each joint by approx. 50mm and stapled onto the battens, the joints should be sealed using 75mm ThermaSeal Foil Tape.

Counter battens are fixed to the wall battens through the material at 600mm centres.

The plasterboard is fixed over the SuperQuilt and onto the battens in the usual manner.

If there is a concern regarding condensation because of the installation of an insulating vapour barrier, please supply full build up information on email to our technical team and they can carry out a condensation risk analysis for you.

U-Value Combined Method (W/m ² K)			0.28
	Thickness (mm)	Conductivity (W/mK)	Resistance (m ² K/W)
Outside Surface	-	-	0.040
Brick, External	100.00	0.770	0.292
Cavity	50.00	-	0.180
Block	100.00	1.130	0.89
Batten Cavity	38.00	-	0.740
SuperQuilt	14.00	-	1.52
Batten Cavity	38.00	-	0.740
Insulated Plasterboard	30.00	-	0.560
Inside Surface	-	-	0.130



U-Value table

*For custom calculations please send request to Sales@Multifoil-Insulation.com

Description

SuperQuilt and Solid Wall

25mm Batten

0.34 W/m ²k

38mm Batten

0.29 W/m ²k

SuperQuilt, Solid Wall and 30mm Insulated Plasterboard EPS

0.29 W/m ²k

0.26 W/m ²k

SuperQuilt, Solid Wall and 40mm Insulated Plasterboard EPS

0.27 W/m ²k

0.24 W/m ²k

SuperQuilt, Solid Wall and SuperQuilt

0.22 W/m ²k

0.19 W/m ²k

SuperQuilt and Cavity Wall un-insulated

0.33 W/m ²k

0.28 W/m ²k

SuperQuilt, Cavity Wall un-insulated & 30mm Ins. Plasterboard EPS

0.28 W/m ²k

0.25 W/m ²k

SuperQuilt, Cavity Wall un-insulated & 40mm Ins. Plasterboard EPS

0.26 W/m ²k

0.23 W/m ²k

SuperQuilt, Cavity Wall un-insulated & SuperQuilt

0.22 W/m ²k

0.18 W/m ²k

SuperQuilt and Cavity Wall Insulated

0.25 W/m ²k

0.22 W/m ²k

SuperQuilt, Cavity Wall Insulated & 30mm Ins. Plasterboard EPS

0.23 W/m ²k

0.21 W/m ²k

SuperQuilt, Cavity Wall Insulated & 40mm Ins. Plasterboard EPS

0.22 W/m ²k

0.20 W/m ²k

SuperQuilt, Cavity Wall Insulated & SuperQuilt

0.18 W/m ²k

0.16 W/m ²k

Dwarf Wall

Fixing Instructions

Installation of SuperQuilt for dwarf wall applications with additional insulation products should be in accordance with the certificate, fixing instructions and good building practice.

SuperQuilt is applied directly from the roll either vertically or horizontally depending on the wall height, pulled tight and stapled onto the timber studs at minimum 300mm centres.

SuperQuilt should be overlapped at each joint by approx. 50mm and stapled onto the battens, the joins should be sealed using 75mm ThermaSeal Foil Tape.

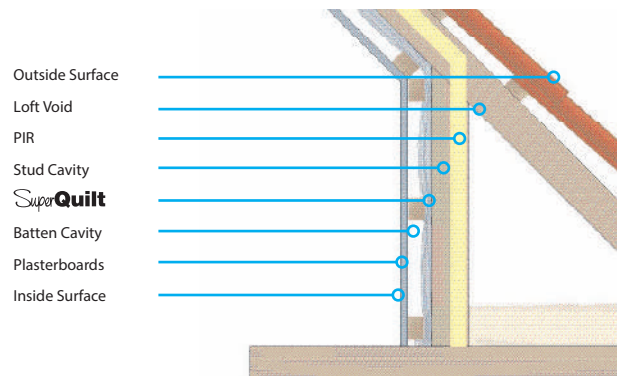
Perpendicular counter battens, recommended 25mm by 38mm are fixed to the wall. Battens must always be placed at the top and bottom of the wall and around the perimeter of doors and windows.

The plasterboard is fixed over the products and onto the battens in the usual manner.

Fitting Equipment

At MultiFoil-Insulation.com we supply a range of fitting equipment such as Genuine ThermaSeal Foil Tape, Double Sided Tape, Pipe and Saddle Clips, Staple Gun Kits, knives and Scissors. Ideal for all Multifoil installation projects.

U-Value Combined Method (W/m ² K)			0.19
	Thickness (mm)	Conductivity (W/mK)	Resistance (m ² K/W)
Outside Surface	-	-	0.040
Loft Void	-	-	0.500
PIR (Between Studs)	50.00	0.22	2.174
Stud cavity	35.00	-	0.740
SuperQuilt	14.00		1.52
Batten Cavity	38.00	-	0.740
Plasterboard	12.50	0.190	0.066
Inside Surface	-	-	0.130



U-Value table

See our How-To-Videos at MultiFoil-Insulation.com or call us on 0114 323 0012

Description

SuperQuilt and 50mm Glasswool 0.040
 SuperQuilt and 100mm Glasswool 0.040
 SuperQuilt and 25mm PIR 0.022
 SuperQuilt and 50mm PIR 0.022
 SuperQuilt and 75mm PIR 0.022
 SuperQuilt and 100mm PIR 0.022
 SuperQuilt Two Layer

25mm Batten

0.24 W/m²k
 0.19 W/m²k
 0.25 W/m²k
 0.21 W/m²k
 0.18 W/m²k
 0.16 W/m²k
 0.21 W/m²k

38mm Batten

0.22 W/m²k
 0.18 W/m²k
 0.23 W/m²k
 0.19 W/m²k
 0.17 W/m²k
 0.15 W/m²k
 0.19 W/m²k

Try our Free and Easy to Use Online U-Value Calculator at MultiFoil-Insulation.com

Free Delivery to the UK Mainland on all Orders over £100+Vat

Call our Sales team today on 0114 323 0012

External Wall Insulation

Fixing Instructions

All timber exposed to the outer cavity, except naturally durable species should be treated.

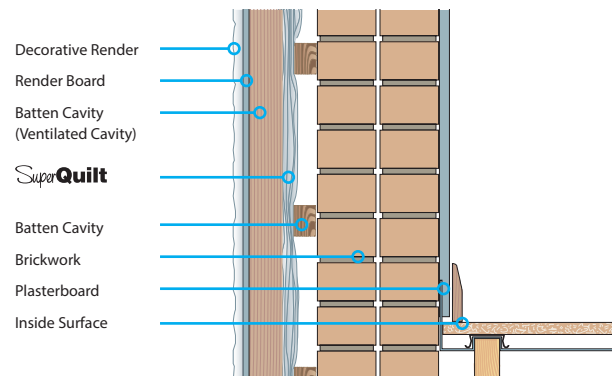
SuperQuilt is applied directly from the roll either vertically or horizontally depending on the wall height, pulled tight and stapled onto the timber battens at minimum 300 mm centres.

SuperQuilt should be overlapped at each joint by approximately 50 mm and stapled onto the battens, the joints should be sealed using 75mm ThermaSeal Foil Tape.

Vertical battens, recommended 25 mm by 38 mm are fixed to the vertical battens; battens should always be placed at the top and bottom of the wall and around the perimeter of doors and windows.

The carrier board is fixed over the product and onto the battens, the external rendered finishing should comply with BS EN 13914-119.

U-Value Combined Method (W/m ² K)			0.30
	Thickness (mm)	Conductivity (W/mK)	Resistance (m ² K/W)
Outside Surface	-	-	0.390
Render	19.00	-	-
Render Board	22.00	-	-
Batten (Ventilated Cavity)	38.00	-	-
SuperQuilt	14.00	-	1.52
Batten Cavity	38.00	-	0.740
Brickwork	225.00	0.560	0.402
Drylining - plaster dabs	15.00	-	0.170
Plasterboard	12.50	0.190	0.066
Inside Surface	-	-	0.130



U-Value table

*For custom calculations please send request to sales@multifoil-insulation.com

Solid Wall

SuperQuilt and Cladding

SuperQuilt and Render Board (Ventilated Cavity)

Cavity Wall

SuperQuilt and Cladding

SuperQuilt and Render Board (Ventilated Cavity)

25mm Batten

0.30 W/m²k

0.33 W/m²k

25mm Batten

0.30 W/m²k

0.33 W/m²k

38mm Batten

0.26 W/m²k

0.30 W/m²k

38mm Batten

0.27 W/m²k

0.31 W/m²k

Call us on 0114 323 0012 For more Information or to order by Phone
Or enquire online at Sales@multifoil-Insulation.com



MultiFoil-Insulation.com have a range of How-To Videos.
 We also have Data Sheets for Walls and Floors.
 For more Technical Information Please call us
 on 0114 323 0012.

Technical Properties

Product Description		
19 Components		
Thickness	40mm appr ox.	
Weight	800g/m ²	
Mechanical Properties	Value	Refer ence Standard
Thermal performance		
Core	1.52m ² K/W	BS EN 16012
Roof	2.50m ² K/W	BS EN 6946
Wall	3.00m ² K/W	BS EN 6946
Floor	4.45m ² K/W	BS EN 6946
Flammability	Class E	BS EN 13501-1
Water vapour resistance	1569MNs/g	BS EN 12572
Emission coefficients of surfaces	0.02	BS EN 16012
Tensile strength	142KP A	BS EN 1608
Packaging	15m ²	7.5m ²
Width	1.5m	1.5m
Length	10m	5m
Weight	12.5Kg	6.25Kg

MultiFoil-Insulation.com

UK and European Distributors Specialising in
 MultiFoil Insulation Solutions

Tel: 0114 323 0012 Email: sales@multifoil-Insulation.com

Try our Free and Easy To Use Online U-Value Calculator!